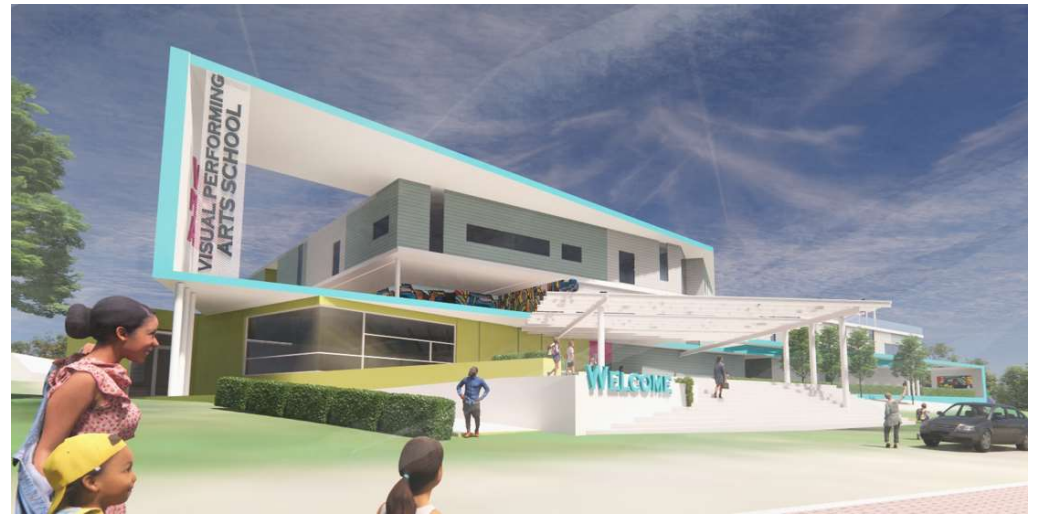


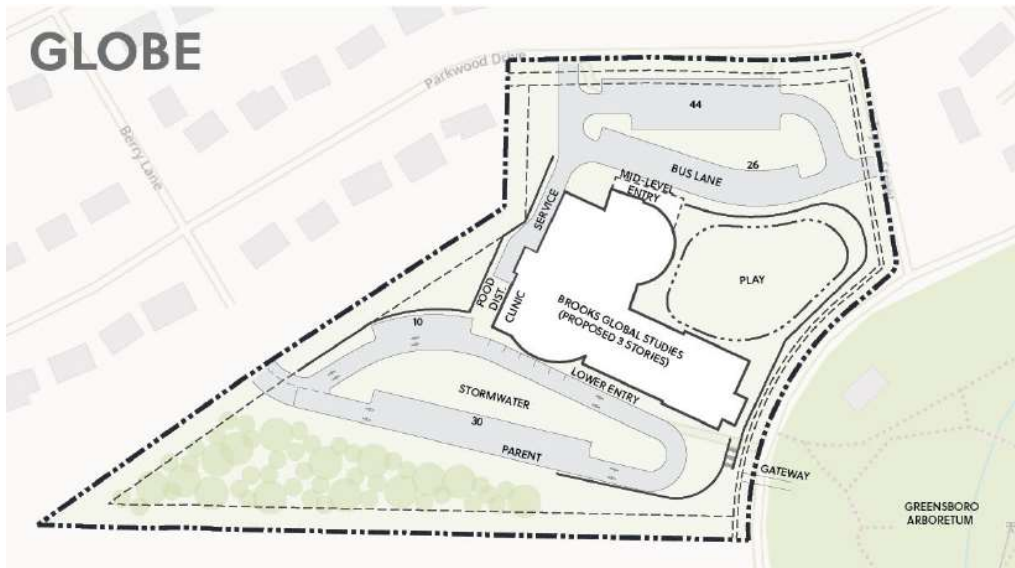
New Visual and Performing Arts ES (K-5)



For illustrative purposes only.



Brooks Global Studies ES (K-5)



For illustrative purposes only.

Claxton ES (K-5)



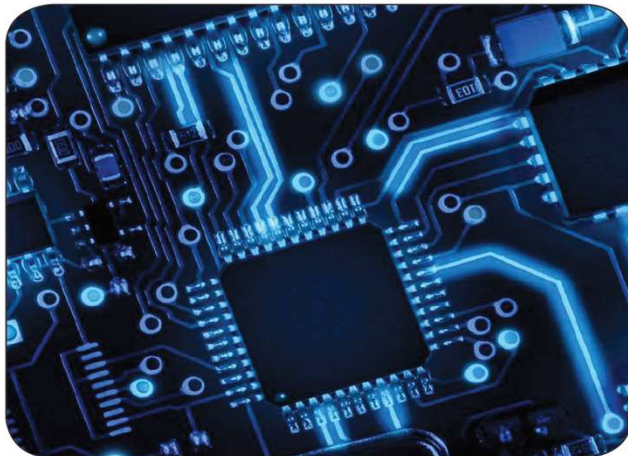
Peck Expeditionary Learning (K-8)



For illustrative purposes only.



Foust Gaming and Robotics ES (K-5)

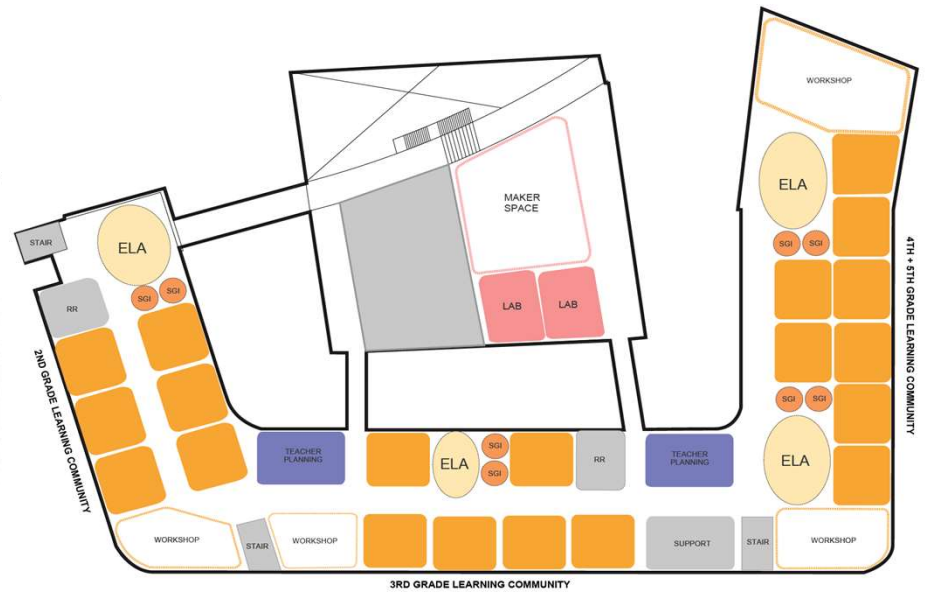


The Circuit Board: Printed circuit board (PCB) design brings your electronic circuits to life in the physical form. Using the parts of a PCB and its components, the PCB design process is reflected in the overall design concept. The circuit board mechanically serves and supports the electronic components of all technology. The design part of The Circuit Board is influenced by the vision of Guilford County Schools to showcase physical action and activity throughout the campus for advanced, interactive, project-based learning.

Foust Gaming and Robotics ES (K-5)



Foust Gaming and Robotics ES (K-5)



Southwest K-8



For illustrative purposes only.





STEM Center Entry

For illustrative purposes only.  **DLR GROUP**

Examples of Inquiry Based Space Layout



For illustrative purposes only.

Learning Suite

 DLR GROUP